

# OptraSculpt®

Efficient contouring of composites

Non-stick  
for faster, more precise  
contouring



# OptraSculpt® Pad

for anterior restorations

- **Foam pad attachments** for non-stick, smooth surface contouring
- **Two pad sizes** for efficient contouring of direct veneers and large-surface class III and IV restorations
- **Reference scale** on the instrument handle for recording the axis alignment and the width of the anterior teeth
- **Optimum working angle** for the anterior region



Optimum working angle for the anterior region



Shaping and contouring with OptraSculpt Pad



Shaping and contouring with a metal spatula



Result achieved with OptraSculpt Pad



Result achieved with a metal spatula



Reference scale 1



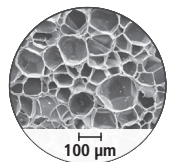
Reference scale 2

## Non-stick shaping and contouring

The non-stick surface of OptraSculpt Pad enables composite filling materials to be shaped and contoured without leaving any unwanted marks. Fillings with smooth and even surfaces are fabricated with ease and efficiency.

## Creation of smooth and even surfaces

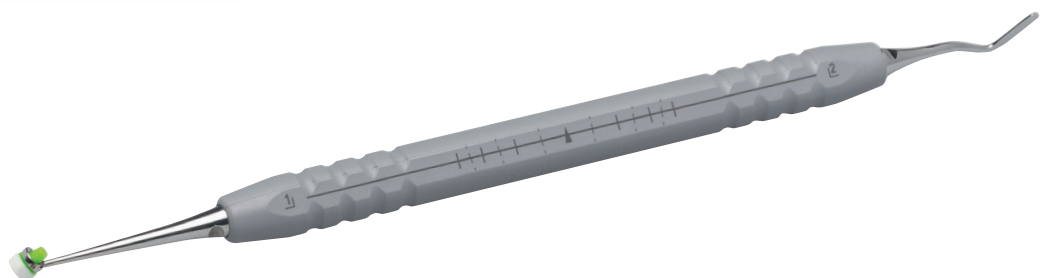
Due to the special foam material, natural looking results are easy to attain in anterior teeth and cervical areas. The highly flexible synthetic foam optimally conforms to the tooth shape and allows the filling to be smoothly contoured.



Microscopic image of the foam

## Professional esthetic results

The reference scales on the instrument handle assist in the creation of esthetic and symmetrical anterior restorations. OptraSculpt Pad truly gives you all the tools you need to create beautiful anterior restorations in a third of the time all in one revolutionary instrument.



**NEW**

# OptraSculpt® Next Generation

*for posterior restorations*

- **Three attachment shapes** for the professional creation of natural tooth anatomy: ball, pointed tip, chisel
- **Optimum working angle** for the posterior region
- **Hygienic storage container** for easy access to attachments



Hygienic storage container for easy access to tips



### **BALL** adaptation of composites

- Box floor
- Deep increments



### **CHISEL** creation of proximal marginal ridges

- Proximal marginal ridges
- Cusp slopes
- Class V cavities



### **POINTED TIP** professional contouring of fissures

- Fissures
- Cusp slopes

Single use tips and pads are suitable for both instruments



OptraSculpt® forms a part of the “Direct Restoratives” product category. The products of this category cover the procedure involved in the direct restoration of teeth – from preparation to restoration care. The products are optimally coordinated with each other and enable successful processing and application.



## Delivery forms

### OptraSculpt® Next Generation & OptraSculpt® Pad

- 683066AN **OptraSculpt & OptraSculpt Pad System Kit**  
 1 x single-ended instrument  
 1 x double-ended instrument  
 60x pads / 4 mm  
 20x ball  
 20x chisel  
 20x pointed tip

### OptraSculpt® Pad

- 639791AN **OptraSculpt Pad Assortment**  
 1 x single-ended instrument  
 60x pads / 4 mm  
 60x pads / 6 mm
- 639792AN **OptraSculpt Pad Refill / 4 mm / 60**  
 60x pads / 4 mm
- 639793AN **OptraSculpt Pad Refill / 6 mm / 60**  
 60x pads / 6 mm
- 646004AN **OptraSculpt Pad Instrument Refill**  
 1 x single-ended instrument

### OptraSculpt® Next Generation

- 683067AN **OptraSculpt Starter Kit**  
 1 x double-ended instrument  
 20x ball  
 20x chisel  
 20x pointed tip
- 683068AN **OptraSculpt Refill / ball / 60**  
 60x ball
- 683069AN **OptraSculpt Refill / chisel / 60**  
 60x chisel
- 683100AN **OptraSculpt Refill / point / 60**  
 60x pointed tip
- 683154AN **OptraSculpt Instrument Refill**  
 1 x double-ended instrument