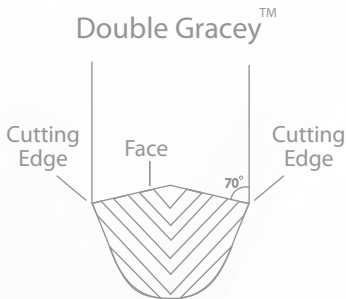


DG **DOUBLE GRACEY™ xp**
The Next Generation



What is Double Gracey™?

Truly a double Gracey design, these instruments combine the best features of Gracey and Universal curettes. Double Graceys™ have rounded toes and two (2) cutting edges. Advantages of using Double Graceys™ include easy adaptation to mesial and distal surfaces as well as buccal and lingual surfaces without switching or flipping the instrument. The Mini versions allow easier access into deeper pockets, tighter interproximal areas, and furcations.



The face of Double Graceys™ are raised, thus creating two slightly sloped faces, approximately 110 degrees, measured from the terminal (lower) shank. The face and blade angles allow the practitioner to use Double Gracey™ exactly how they would use traditional gracey curettes; the terminal shank parallel to the tooth axis while performing the cleaning.

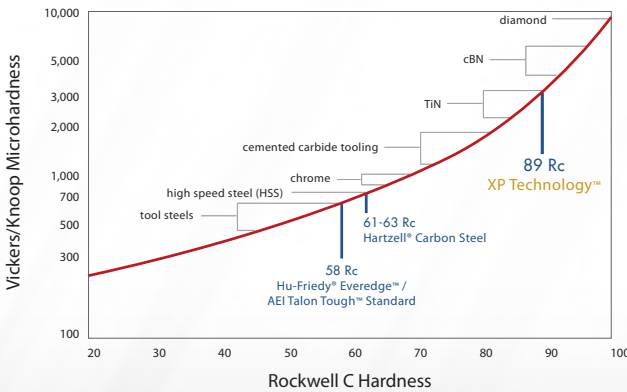
Double Gracey™ Technology

- + Enables a 12 o'clock ergonomic position for the duration of cleaning
- + Allows clinician to keep lower shank parallel to tooth surface (axis), similar to traditional Gracey instrumentation
- + Maneuver between mesial and distal surfaces without switching or flipping instruments
- + Enables clinician to scale from light to heavy calculus
- + Rounded toe provides safe access for subgingival scaling

All Double Graceys™ are sharpen-free because of American Eagle Instruments' patented XP Technology.™

XP Technology™ is a patented process that bonds a super-hard alloy to a stainless steel substrate (at the molecular level), making the surface much more durable and wear-resistant. This process allows us to put a much sharper edge onto a thinner blade, thus eliminating the time consuming and imperfect process of re-sharpening your instruments.

Standard dental instruments are manufactured using stainless and carbon steels reaching Rockwell scale hardness of between 58 and 63. The special characteristics of our patented XP Technology™ achieve an incredible Rockwell scale hardness of 89! This is an order of magnitude more durable than any other instrument on the market today.



XP Technology™

- + Thinner blade design
- + More comfort and less fatigue
- + Saves you time & money
- + Satisfaction guarantee

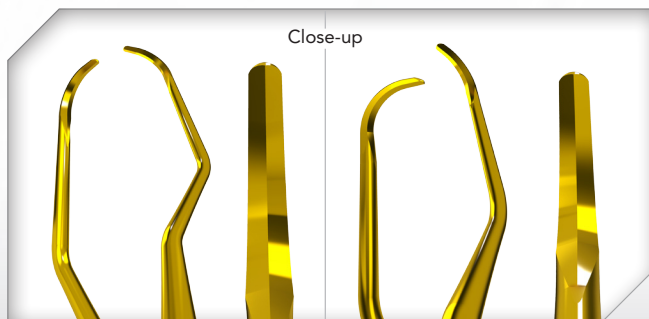
DE GRACEY™ ANTERIOR / MINI ANTERIOR

Double Gracey™ - Anterior

Double Gracey™ - Mini Anterior

The Double Gracey™ Anterior and Mini Anterior designs are patterned after a traditional Gracey instrument, one end combines the Gracey 1-2 while the other end is a Gracey 7-8. This unique combination allows the clinician to cover all anterior surfaces as well as buccal and lingual surfaces. The Mini Anterior version has a longer terminal shank and a 50% shorter blade.

- + Replaces all anterior and buccal/lingual Gracey curettes
- + Replaces all anterior universal curettes
- + Move from tooth to tooth without switching or flipping instruments



Anterior Replaces Gracey curettes 1-2, 3-4, 5-6, 7-8, and 9-10 along with Universal curettes.

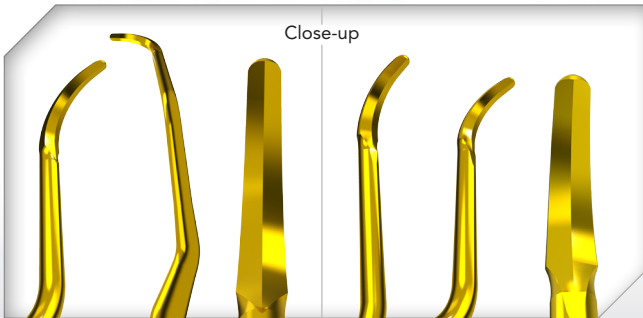
Mini Anterior Replaces Access and mini Gracey curettes 1-2, 3-4, 5-6, 7-8, and 9-10 along with Universal curettes.

DG POSTERIOR / MINI POSTERIOR

Double Gracey™ - Posterior Double Gracey™ - Mini Posterior

The Double Gracey™ Posterior and Mini Posterior combine a traditional Gracey 11-12 and 13-14 (mesial & distal). One end features a Gracey 11 with a Gracey 14, while the other end has a Gracey 12 with a Gracey 13. This unique combination allows the clinician to cover all posterior surfaces without switching or flipping instruments. The Mini Posterior version has a longer terminal shank and a 50% shorter blade.

- + Replaces all posterior, (mesial/distal) Gracey curettes
- + Replaces all posterior universal curettes
- + Move from mesial to distal surfaces without switching or flipping instruments



Posterior Replaces mesial/distal Gracey curettes 11-12, 13-14, and 15-16 along with Universal curettes.

Mini Posterior Replaces Access and mini Gracey curettes 11-12, 13-14, and 15-16 along with Universal curettes.



DG DOUBLE GRACEY™ KIT

DOUBLE GRACEY™ KIT

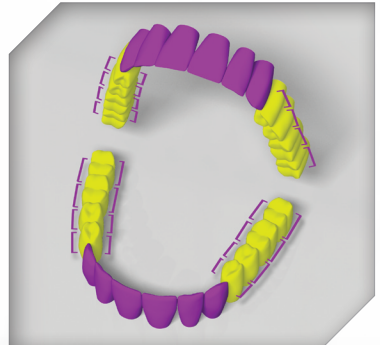


Double Gracey™ - Anterior



Double Gracey™ - Posterior

The Double Gracey™ Kit combines the Posterior and Anterior Double Gracey™ instruments. With these two instruments you can scale an entire mouth.



PSD files for mouth images?

Double Gracey™	Replaces	Surfaces
Anterior	Gracey 1-2, 3-4, 5-6, 7-8, and 9-10 / Anterior Universal Curettes	anterior buccal / lingual
Posterior	Gracey 11-12, 13-14, and 15-16 / Posterior Universal Curettes	mesial / distal

DG DOUBLE GRACEY™ MINI KIT

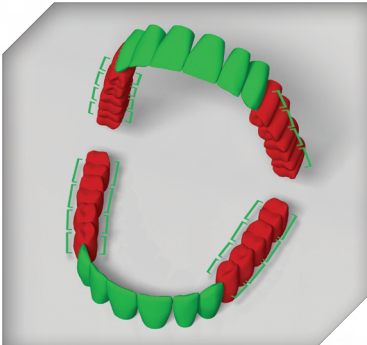
DOUBLE GRACEY™ MINI KIT



Double Gracey™ - Mini Anterior



Double Gracey™ - Mini Posterior



PSD files for mouth images?

The Double Gracey™ Mini Kit combines the Mini Posterior and Mini Anterior Double Gracey™ instruments. With these two instruments you can scale an entire mouth. The mini Double Gracesys™ have longer terminal shanks and shorter blades, this kit is ideal for getting into deeper pockets, furcations and more narrow interproximals.

Double Gracey™	Replaces	Surfaces
Mini Anterior	Access and mini Gracey 1-2, 3-4, 5-6, 7-8, and 9-10 / Anterior Universal Curettes	anterior buccal / lingual
Mini Posterior	Mini Gracey Access 11-12, 13-14, and 15-16 / Posterior Universal Curettes	mesial / distal

To order your Double Gracey™ use the following American Eagle Part codes:

Double Gracey™ - Anterior	AEDGAXPX
Double Gracey™ - Posterior	AEDGPPX
Double Gracey™ - Mini Anterior	AEDGAXPX
Double Gracey™ - Mini Posterior	AEDGPPX
Double Gracey™ - Kit	AEDGKXPX
Double Gracey™ - Mini Kit	AEDGMKXPX



AMERICAN EAGLE
INSTRUMENTS® INC

1-800-551-5172 | WWW.AM-EAGLE.COM