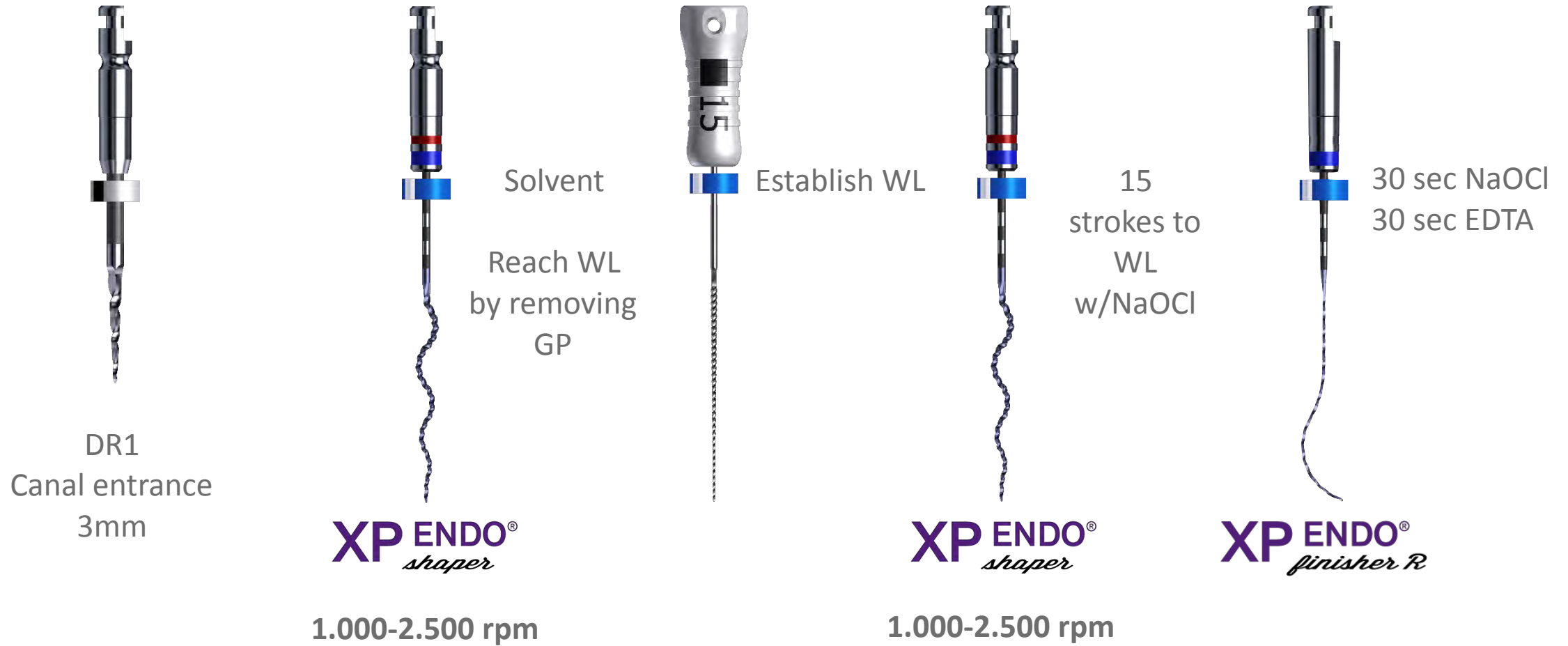


XP-endo® Retreatment

Clinical Protocol

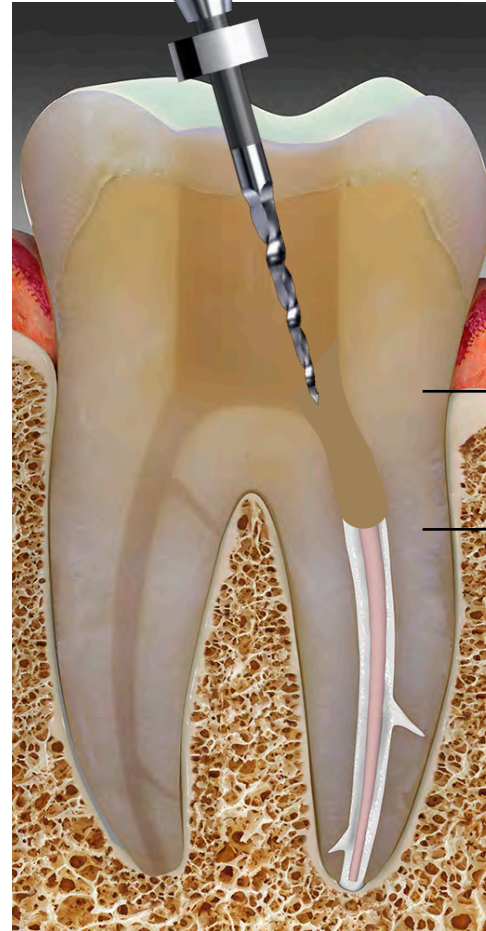


XP-endo® Retreatment

Step 1



DR1
30/.10



Create a space in the coronal portion of the gutta percha using **DR1**

800-1.000 rpm

XP-endo[®] Retreatment

Step 2

Solvents:
Orange Oil
Chloroform



Place one drop of **solvent** oil on the coronal space created and wait for at least **1 minute**

XP-endo[®] Retreatment

Step 3



XP ENDO[®]
shaper

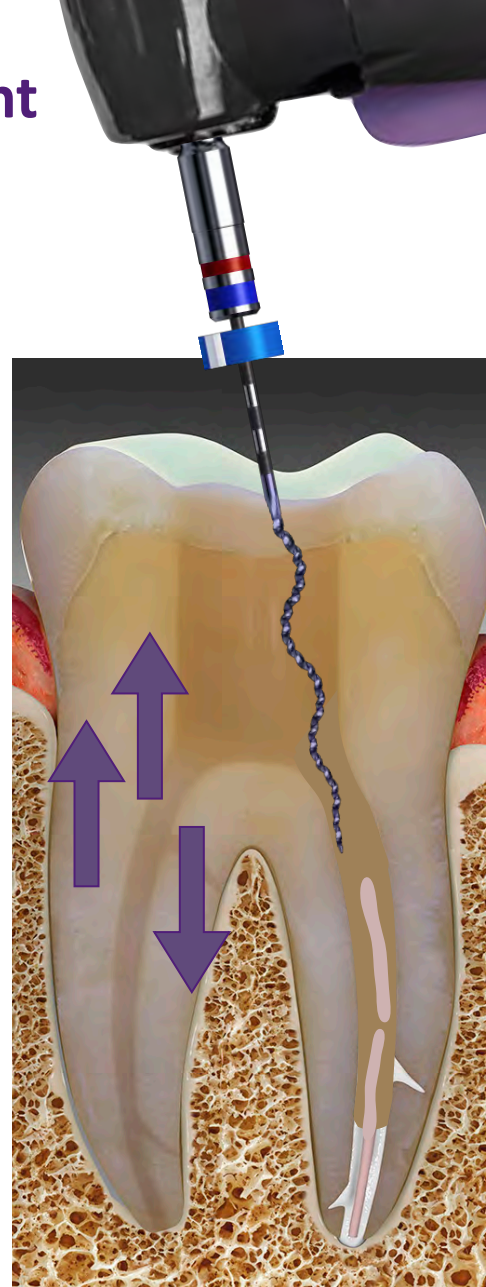


Place the tip of **XP-endo[®] Shaper** into the prepared space in the gutta percha, disengage slightly and start the motor

1.000-2.500 rpm

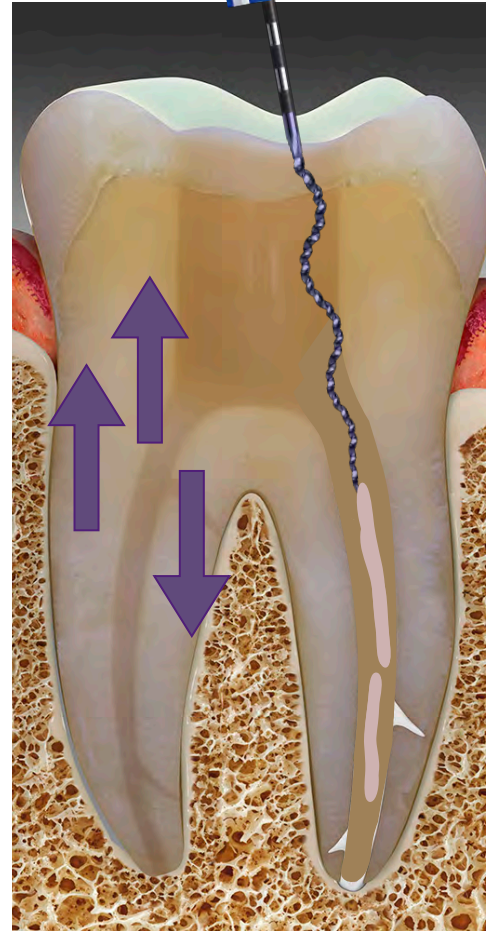
Use pecking motion until the **XP-endo® Shaper's** tip engage the gutta percha.

Use **light pressure** to help advance the **XP-endo® Shaper** down the canal until working length.



Proceed with gentle strokes

Allow the **XP-endo® Shaper** to gently corkscrew around the gutta percha.
Tease out large strands of gutta percha.



*Use long
gentle strokes*

XP-endo® Retreatment

Step 6

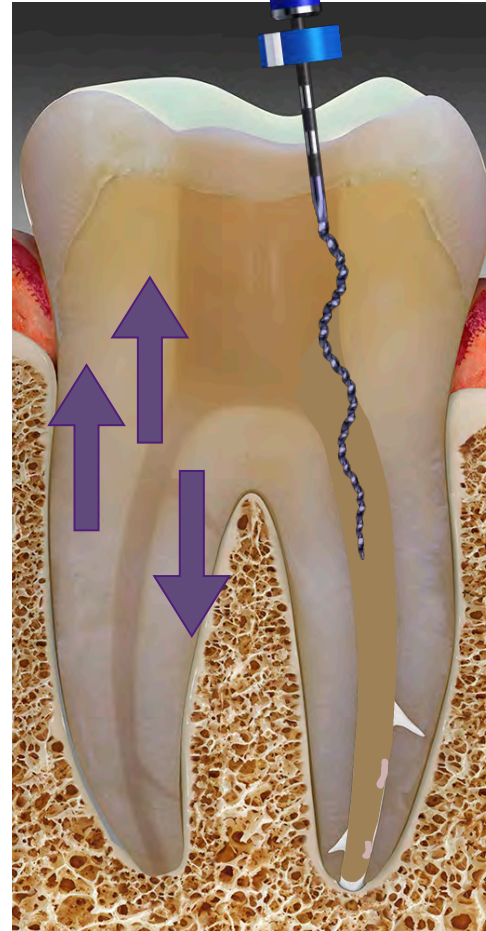
Use K-file #15 to obtain the working length with an apex locator



XP-endo® Retreatment

Step 7

Fill the pulp chamber and canals with NaOCl.
Use now the **XP-endo® Shaper** to **WL**



*Use long
gentle strokes*

10 – 15 X

XP-endo[®] Retreatment

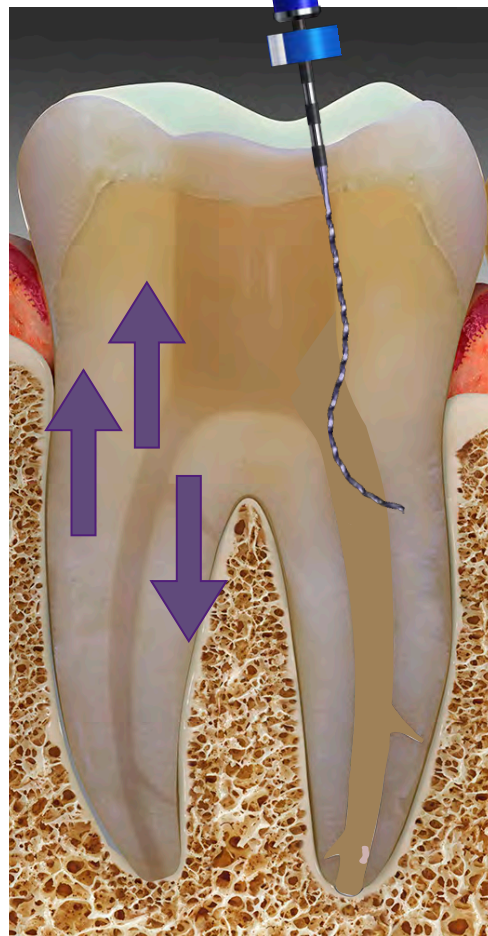
Step 8



XP ENDO[®]
finisher R

Irrigate with NaOCl and use the **XP-endo[®] Finisher R** for at least **1 minute**.

Contact full length of the canal



Use slow and gentle longitudinal movements

800 – 1.000 rpm

XP-endo® Retreatment

Step 9



Use copious **NaOCl** irrigation and suction to remove the gutta percha and sealer tags.