



OsteoBiol[®]
by Tecnos

mp3[®]

ULTIMATE PERFORMANCE AND HANDLING
Pre-hydrated collagenated heterologous cortico-cancellous bone mix

REGENERATION SCIENCE

INSPIRED BY NATURE



A unique biotechnology

TECNOSS®: A UNIQUE PROCESS THAT ACCELERATES AND GUIDES NATURAL BONE REGENERATION

Tecnoss® developed and patented a unique biotechnology that prevents the ceramization phase of natural bone and preserves the tissue collagen, allowing an osteoclastic-type remodelling of the biomaterial similar to physiological bone turnover and delivering a product endowed with characteristics very similar to human mineral bone⁽¹⁾.

The combination of these factors allows a consistent new bone formation and a close contact between neo-formed bone and biomaterial.

COLLAGEN: A KEY FACTOR FOR BONE REGENERATION

Collagen has a key role in bone regeneration process in that:

- it acts as a valid substrate for platelet activation and aggregation
- it serves to attract and differentiate the mesenchymal stem cells present in the bone marrow⁽²⁾
- it increases the proliferation rate of the osteoblasts up to 2/3 times⁽³⁾
- it stimulates the activation of the platelets, osteoblasts and osteoclasts in the tissue healing process

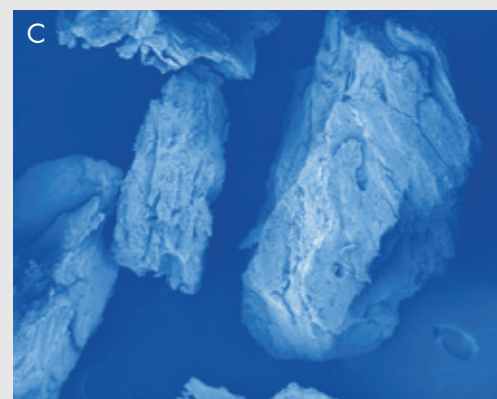
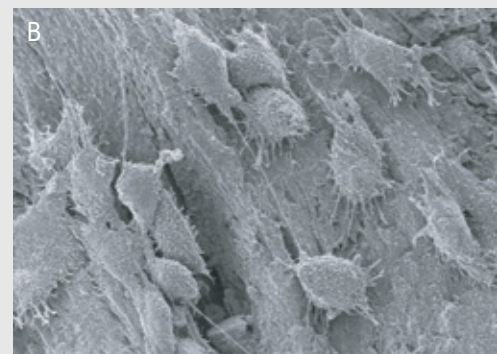
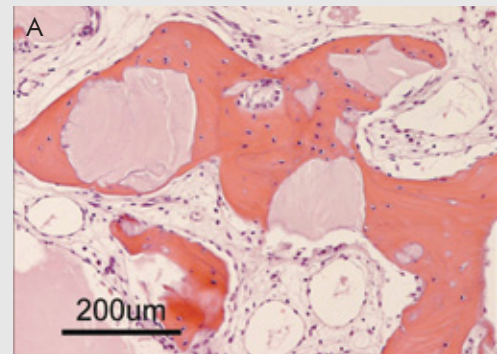
OSTEOBIOL®: UNIQUE COLLAGENATED BIOMATERIALS

Thanks to the innovative Tecness® technology, the OsteoBiol® line has the following important characteristics:

- absence of a foreign body response⁽⁴⁾
- gradual resorption over time^(5,6)
- stimulation/acceleration of physiological tissue healing process⁽²⁾
- protection of the grafting site from infection (membranes)⁽⁷⁾
- capability of carrying medication to the surgical site⁽⁸⁾

The Tecness® new generation of biomaterials, thanks to a revolutionary technology, goes beyond the simple role of aiding natural bone regrowth by stimulating and accelerating this vital physiological process.

OsteoBiol®
by Tecness



A | Histology at 6 months. Human sinus grafted with OsteoBiol® mp3®. Biopsy courtesy of Dr P Palacci, Marseille, France. Histology courtesy of Prof U Nannmark, University of Göteborg, Sweden

B | SEM image of an OsteoBiol® bone matrix colonized by osteoblasts from a cell-line (MG63). Courtesy of Prof U Nannmark, University of Göteborg, Sweden

C | SEM image showing OsteoBiol® mp3® particles, granulometry 600-1000 µm. Courtesy of Prof U Nannmark, University of Göteborg, Sweden

(1) Figueiredo M et al. J Biomed Mater Res B Appl Biomater, 2010 Feb; 92(2):409-419

(2) Brunelli G et al. Eur J Inflamm, 2011, Vol. 9, no. 3 (S), 103-107

(3) Hsu FY et al. Biomaterials, 1999, 20:1931-1936

(4) Crespi R et al. Int J Oral Maxillofac Implants, 2011 Jul - Aug; 26(4):866-72

(5) Nannmark U, Sennerby L. Clin Implant Dent Relat Res, 2008 Dec; 10(4):264-70

(6) Barone A et al. Clin Implant Dent Relat Res, 2012 Jun; 14(3):373-9

(7) Barone A et al. Clin Oral Implants Res, 2013 Nov; 24(11):1231-7

(8) Fischer K et al. Clin Oral Implants Res, 2015 Oct; 26(10):1135-42. Epub 2014 Sep 15



Ultimate performance and handling



CHARACTERISTICS

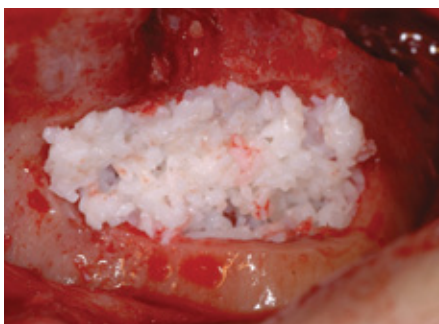
mp3® is a heterologous origin biomaterial made of 600-1000 µm collagenated cortico-cancellous bone mix properly mixed with collagen gel. Gradually resorbable⁽⁵⁾, it preserves the original graft shape and volume (osteoconductive property)^(9,10,11). Moreover, the preserved collagen matrix facilitates blood clotting and the subsequent invasion of repairing and regenerative cells. These unique properties allow an excellent rate of new bone formation, delivering graft volume preservation, a healthy new bony tissue and ultimately, a successful implant rehabilitation.

HANDLING

Available in ready-to-use pre-hydrated syringes, mp3® can be easily grafted avoiding the hydration and manipulation phases decreasing the risk of accidental exposure to pathogens.

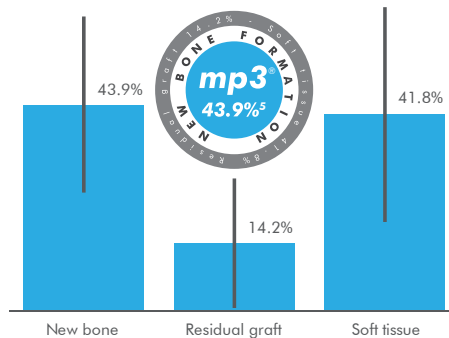
CLINICAL INDICATIONS

mp3® main clinical indication is lateral access maxillary sinus lift^(9,12,13), always in association with *Evolution* membranes: the mp3® syringe can be directly applied into the bony window without having to mix the product with saline or blood. Due to its collagen gel component, mp3® allows an excellent graft stability while its hydrophilia guarantees quick blood absorption and therefore the necessary graft vascularization.



Maxillary sinus grafted with OsteoBiol® mp3®.
Courtesy of Dr Antonio Barone, Lido di Camaiore, Italy

combination with autogenous bone blocks⁽¹⁵⁾ or with OsteoBiol® Cortical Lamina⁽¹⁶⁾.



OsteoBiol® mp3® at 6 months from grafting with lateral access sinus lift procedure in human patients⁽⁵⁾

mp3® can also be used in combination with *Evolution* membranes for alveolar ridge preservation⁽¹⁴⁾: the application of this biomaterial limits significantly the alveolar ridge width and height reduction that would naturally occur with spontaneous healing, preserving thus the alveolar ridge volume and allowing a correct second stage implant placement.

Finally, mp3® is indicated for horizontal augmentation (two-wall defects) in

Tissue of origin

Heterologous cortico-cancellous bone mix

Tissue collagen

Preserved plus an additional 10% collagen gel (OsteoBiol® Gel 0)

Physical form

Pre-hydrated granules and collagen gel

Composition

90% granulated mix, 10% collagen gel

Granulometry

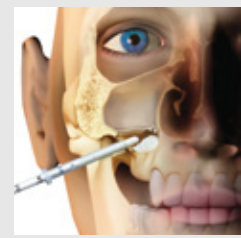
600-1000 µm

Re-entry time

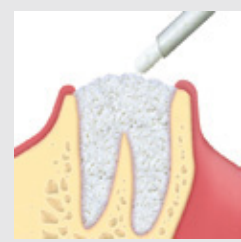
About 5 months

Packaging

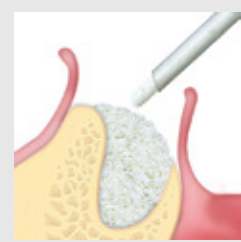
Syringe: 1.0 cc, 3 x 0.5 cc, 3 x 1.0 cc, 3 x 0.25 cc



MAXILLARY SINUS FLOOR AUGMENTATION



POST-EXTRACTIVE SOCKETS

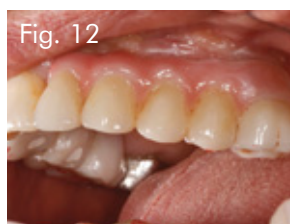
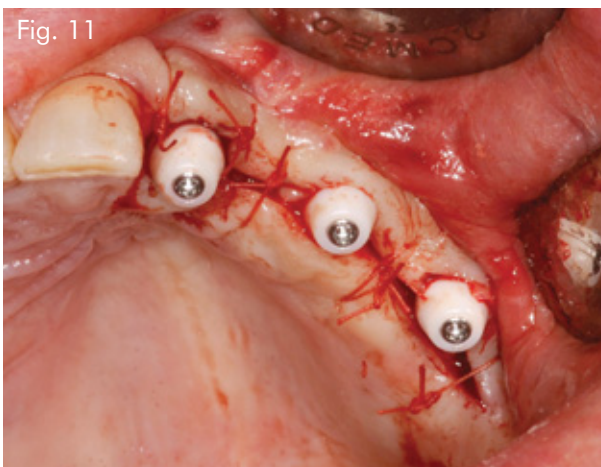
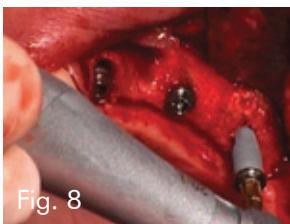
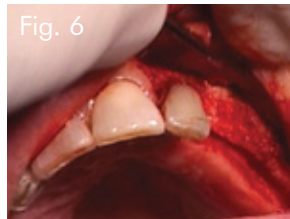
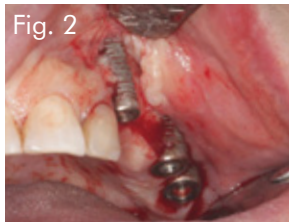


TWO-WALL DEFECTS

(9) Ramirez F et al. Clin Oral Implants Res, 2012 Jan 26, Epub ahead of print
 (10) Calvo Guirado et al. Clin Implant Dent Relat Res, 2013 Feb;15(1):143-51 Epub 2011 Mar 31
 (11) Ramirez F et al. Clin Oral Implants Res, 2011 Jul; 22(7):767-73
 (12) Silvestri M et al. Int J Oral maxillofac Implants, 2013 Mar-Apr;28(2):543-9
 (13) Pagliani L et al. Clin Implant Dent Relat Res, 2012 Oct;14(5):746-58 Epub 2010 Oct 26
 (14) Barone A et al. J Periodontol, 2008 aug;79(8):1370-7
 (15) Barone A et al. J Oral Maxillofac Surg, 2007, 65:2039-2046
 (16) Wachtel h et al. Int J Periodontics Restorative Dent, 2013 Jul-Aug;33(4):491-7



Excellent clinical performances



CASE REPORT

HORIZONTAL AUGMENTATION

Treatment of a failing implant case

Sex: **Female** | Age: **56**

Fig. 1 Clinical situation. Implant supported restoration upper left. Teeth supported restoration upper right.

Fig. 2 Full thickness flap elevated showing implants placed partly outside the alveolar ridge

Fig. 3 Implants are removed. Major bone loss defects can be seen

Fig. 4 Ridge reconstructed with OsteoBiol® mp3® carefully compacted against the plate of bone

Fig. 5 A collagen sponge is placed above the mp3® giving more stability to the material and adding volume to the soft tissues

Fig. 6 Four months later a flap is elevated

Fig. 7 The lateral incisor is extracted and the recreated ridge can be seen

Fig. 8-9 The implants are placed into a very dense bone

Fig. 10-11 Four months later a flap is elevated and abutments placed into a very stable bone (ISQ Osstell between 72 and 78)

Fig. 12 Prosthetic restorations in place. Upper left and right

Documentation provided by
Dr **Patrick Palacci**
Brånemark Osseointegration Center
Marseille, France
e-mail: patrick@palacci.com

Bone substitute: **OsteoBiol® mp3®**

Barone A, Covani U
MAXILLARY ALVEOLAR RIDGE RECONSTRUCTION WITH NONVASCULARIZED AUTOGENOUS BLOCK BONE: CLINICAL RESULTS
 JOURNAL OF ORAL AND MAXILLOFACIAL SURGERY, 2007 OCT;65(10):2039-46

Barone A, Santini S, Marconcini S, Giacomelli L, Gherlone E, Covani U
OSTEOTOMY AND MEMBRANE ELEVATION DURING THE MAXILLARY SINUS AUGMENTATION PROCEDURE. A COMPARATIVE STUDY: PIEZOELECTRIC DEVICE VS. CONVENTIONAL ROTATIVE INSTRUMENTS
 CLINICAL ORAL IMPLANTS RESEARCH, 2008 MAY;19(5):511-5. EPUB 2008 MAR 26

Barone A, Cornelini R, Ciaglia R, Covani U
IMPLANT PLACEMENT IN FRESH EXTRACTION SOCKETS AND SIMULTANEOUS OSTEOTOME SINUS FLOOR ELEVATION: A CASE SERIES
 INTERNATIONAL JOURNAL OF PERIODONTICS AND RESTORATIVE DENTISTRY, 2008 JUN; 28(3):283-9

Barone A, Aldini NN, Fini M, Giardino R, Calvo Guirado JL, Covani U
XENOGRAFT VERSUS EXTRACTION ALONE FOR RIDGE PRESERVATION AFTER TOOTH REMOVAL: A CLINICAL AND HISTOMORPHOMETRIC STUDY
 JOURNAL OF PERIODONTOLOGY, 2008 AUG;79(8):1370-7

Nannmark U, Sennerby L
THE BONE TISSUE RESPONSES TO PREHYDRATED AND COLLAGENATED CORTICO-CANCELLOUS PORCINE BONE GRAFTS: A STUDY IN RABBIT MAXILLARY DEFECTS
 CLINICAL IMPLANT DENTISTRY AND RELATED RESEARCH, 2008 DEC;10(4):264-70. EPUB 2008 JAN 30

Calvo Guirado JL, Gómez Moreno G, Barone A, Cutando A, Alcaraz Baños M, Chiva F, López Mari L, Guardia J
MELATONIN PLUS PORCINE BONE ON DISCRETE CALCIUM DEPOSIT IMPLANT SURFACE STIMULATES OSTEOINTEGRATION IN DENTAL IMPLANTS
 JOURNAL OF PINEAL RESEARCH, 2009, 47(2):164-72

Covani U, Marconcini S, Crespi R, Barone A
IMMEDIATE IMPLANT PLACEMENT AFTER REMOVAL OF A FAILED IMPLANT: A CLINICAL AND HISTOLOGICAL CASE REPORT
 JOURNAL OF ORAL IMPLANTOLOGY, 2009; 35(4):189-95

Calvo Guirado JL, Gomez Moreno G, Lopez Mari L, Ortiz Ruiz AJ, Guardia J
ATRAUMATIC MAXILLARY SINUS ELEVATION USING THREADED BONE DILATORS FOR IMMEDIATE IMPLANTS. A THREE-YEAR CLINICAL STUDY
 MEDICINA ORAL, PATOLOGIA ORAL Y CIRUGIA BUCAL, 2010 MAR 1; 15(2):E366-70

Barone A, Ricci M, Covani U, Nannmark U, Azarmehr I, Calvo Guirado JL
MAXILLARY SINUS AUGMENTATION USING PREHYDRATED CORTICOCANCELLOUS PORCINE BONE: HISTOMORPHOMETRIC EVALUATION AFTER 6 MONTHS
 CLINICAL IMPLANT DENTISTRY AND RELATED RESEARCH, 2010 MAY 11 EPUB

Calvo Guirado JL, Gómez Moreno G, López Mari L, Guardia J, Marinez Gonzalez JM, Tresguerres IF, Paredes SD, Fuentes Breto L
ACTIONS OF MELATONIN MIXED WITH COLLAGENIZED PORCINE BONE VERSUS PORCINE BONE ONLY ON OSTEOINTEGRATION OF DENTAL IMPLANTS
 JOURNAL OF PINEAL RESEARCH, 2010, 48:194-203

Pagliani L, Andersson P, Lanza M, Nappo A, Verrocchi D, Volpe S, Sennerby L
A COLLAGENATED PORCINE BONE SUBSTITUTE FOR AUGMENTATION AT NESS IMPLANT SITES: A PROSPECTIVE 1-YEAR MULTICENTER CASE SERIES STUDY WITH HISTOLOGY
 CLINICAL IMPLANT DENTISTRY AND RELATED RESEARCH, 2010 OCT 26 EPUB

Barone A, Ricci M, Calvo Guirado JL, Covani U
BONE REMODELLING AFTER REGENERATIVE PROCEDURES AROUND IMPLANTS PLACED IN FRESH EXTRACTION SOCKETS: AN EXPERIMENTAL STUDY IN BEAGLE DOGS
 CLINICAL ORAL IMPLANTS RESEARCH, 2011 OCT;22(10):1131-7

Calvo Guirado JL, Ramirez Fernandez MP, Negri B, Delgado Ruiz RA, Maté Sanchez De Val JE, Gomez Moreno G
EXPERIMENTAL MODEL OF BONE RESPONSE TO COLLAGENIZED XENOGRAFTS OF PORCINE ORIGIN (OSTEOBIOL® MP3): A RADIOLOGICAL AND HISTOMORPHOMETRIC STUDY
 CLINICAL IMPLANT DENTISTRY AND RELATED RESEARCH, 2011 MAR 31, EPUB AHEAD OF PRINT

Ramirez Fernandez MP, Calvo Guirado JL, Delgado Ruiz RA, Maté Sanchez De Val JE, Vicente Ortega V, Meseguer Olmos L
BONE RESPONSE TO HYDROXYAPATITES WITH OPEN POROSITY OF ANIMAL ORIGIN (PORCINE OSTEOBIOL® MP3) AND BOVINE (ENDBON®): A RADIOLOGICAL AND HISTOMORPHOMETRIC STUDY
 CLINICAL ORAL IMPLANTS RESEARCH, 2011 JUL; 22(7):767-73

Hinze M, Vrielinck L, Thalmair T, Wachtel H, Bolz W
ZYGOMATIC IMPLANT PLACEMENT IN CONJUNCTION WITH SINUS BONE GRAFTING: THE "EXTENDED SINUS ELEVATION TECHNIQUE". A CASE-COHORT STUDY
 ORAL AND CRANIOFACIAL TISSUE ENGINEERING, 2011;1:188-197

Slotte C, Lindfors N, Nannmark U
SURGICAL RECONSTRUCTION OF PERI-IMPLANT BONE DEFECTS WITH PREHYDRATED AND COLLAGENATED PORCINE BONE AND COLLAGEN BARRIERS: CASE PRESENTATIONS
 CLINICAL IMPLANT DENTISTRY AND RELATED RESEARCH, 2011 DEC 6, EPUB AHEAD OF PRINT

Barone A, Ricci M, Grassi RF, Nannmark U, Quaranta A, Covani U
A 6-MONTH HISTOLOGICAL ANALYSIS ON MAXILLARY SINUS AUGMENTATION WITH AND WITHOUT USE OF COLLAGEN MEMBRANES OVER THE OSTEOTOMY WINDOW: RANDOMIZED CLINICAL TRIAL
 CLINICAL ORAL IMPLANTS RESEARCH, 2011 DEC 12, EPUB AHEAD OF PRINT

Ramirez Fernandez MP, Calvo Guirado JL, Maté Sanchez De Val JE, Delgado Ruiz RA, Negri B, Barona Dorado C
ULTRASTRUCTURAL STUDY BY BACKSCATTERED ELECTRON IMAGING AND ELEMENTAL MICROANALYSIS OF BONE-TO-BIOMATERIAL INTERFACE AND MINERAL DEGRADATION OF PORCINE XENOGRAFTS USED IN MAXILLARY SINUS FLOOR ELEVATION
 CLINICAL ORAL IMPLANTS RESEARCH, 2012 JAN 26, EPUB AHEAD OF PRINT

Barone A, Orlando B, Cingano L, Marconcini S, Derchi G, Covani U
A RANDOMIZED CLINICAL TRIAL TO EVALUATE AND COMPARE IMPLANTS PLACED IN AUGMENTED VS. NON-AUGMENTED EXTRACTION SOCKETS. A 3-YEAR EVALUATION
 JOURNAL OF PERIODONTOLOGY, 2011 DEC 5, EPUB AHEAD OF PRINT

Calvo Guirado JL, Maté Sanchez JE, Delgado Ruiz L, Ramirez Fernandez MP
CALCULATION OF BONE GRAFT VOLUME USING 3D RECONSTRUCTION SYSTEM
 MEDICINA ORAL, PATOLOGIA ORAL Y CIRUGIA BUCAL, 2011 MAR 1, 16(2):E260-4

Barone A, Ricci M, Tonelli P, Santini S, Covani U
TISSUE CHANGES OF EXTRACTION SOCKETS IN HUMANS: A COMPARISON OF SPONTANEOUS HEALING VS. RIDGE PRESERVATION WITH SECONDARY SOFT TISSUE HEALING
 CLINICAL ORAL IMPLANTS RESEARCH, 2012

Silvestri M, Martegani P, D'avenia F, Farneti M, Capri D, Paolantoni G, Landi L
SIMULTANEOUS SINUS AUGMENTATION WITH IMPLANT PLACEMENT: HISTOMORPHOMETRIC COMPARISON OF TWO DIFFERENT GRAFTING MATERIALS. A MULTICENTER DOUBLE-BLIND PROSPECTIVE RANDOMIZED CONTROLLED CLINICAL TRIAL
 INT JOURNAL OF ORAL AND MAXILLOFACIAL IMPLANTS, 2013 MAR-APR;28(2):543-9

Wachtel H, Fickl S, Hinze M, Bolz W, Thalmair T
THE BONE LAMINA TECHNIQUE: A NOVEL APPROACH FOR LATERAL RIDGE AUGMENTATION - A CASE SERIES
 INT JOURNAL OF PERIODONTICS AND RESTORATIVE DENTISTRY, 2013 JUL-AUG;33(4):491-7

Felice P, Pistilli R, Piattelli M, Soardi E, Corvino V, Esposito M
POSTERIOR ATROPHIC JAWS REHABILITATED WITH PROSTHESES SUPPORTED BY 5 X 5 MM IMPLANTS WITH A NOVEL NANOSTRUCTURED CALCIUM-INCORPORATED TITANIUM SURFACE OR BY LONGER IMPLANTS IN AUGMENTED BONE. PRELIMINARY RESULTS FROM A RANDOMISED CONTROLLED TRIAL
 EUROPEAN JOURNAL OF ORAL IMPLANTOLOGY, SUMMER;5(2):149-61

Pistilli R, Felice P, Piattelli M, Gessaroli M, Soardi E, Barausse C, Buti J, Corvino V, Esposito M
POSTERIOR ATROPHIC JAWS REHABILITATED WITH PROSTHESES SUPPORTED BY 5 X 5 MM IMPLANTS WITH A NOVEL NANOSTRUCTURED CALCIUM-INCORPORATED TITANIUM SURFACE OR BY LONGER IMPLANTS IN AUGMENTED BONE. ONE-YEAR RESULTS FROM A RANDOMISED CONTROLLED TRIAL
 EUROPEAN JOURNAL OF ORAL IMPLANTOLOGY, 2013;6(4):343-357

Barone A, Borgia V, Covani U, Ricci M, Piattelli A, Iezzi G
FLAP VERSUS FLAPLESS PROCEDURE FOR RIDGE PRESERVATION IN ALVEOLAR EXTRACTION SOCKETS: A HISTOLOGICAL EVALUATION IN A RANDOMIZED CLINICAL TRIAL
 CLINICAL ORAL IMPLANTS RESEARCH, 2015 JUL;26(7):806-13, EPUB 2014 MAR 1

Barone A, Ricci M, Romanos GE, Tonelli P, Alfonsi F, Covani U
BUCCAL BONE DEFICIENCY IN FRESH EXTRACTION SOCKETS: A PROSPECTIVE SINGLE COHORT STUDY
 CLINICAL ORAL IMPLANTS RESEARCH, 2015 JUL;26(7):823-30. EPUB 2014 MAR 31

Thalmair T, Fickl S, Schneider D, Hinze M, Wachtel H
DIMENSIONAL ALTERATIONS OF EXTRACTION SITES AFTER DIFFERENT ALVEOLAR RIDGE PRESERVATION TECHNIQUES - A VOLUMETRIC STUDY
 JOURNAL OF CLINICAL PERIODONTOLOGY, 2013 JUL;40(7):721-7

Barone A, Toti P, Quaranta A, Alfonsi F, Cucchi A, Calvo Guirado JL, Negri B, Di Felice R, Covani U
VOLUMETRIC ANALYSIS OF REMODELLING PATTERN AFTER RIDGE PRESERVATION COMPARING USE OF TWO TYPES OF XENOGRAFTS. A MULTICENTRE RANDOMIZED CLINICAL TRIAL
 CLINICAL ORAL IMPLANTS RESEARCH, 2015 FEB 26 EPUB AHEAD OF PRINT

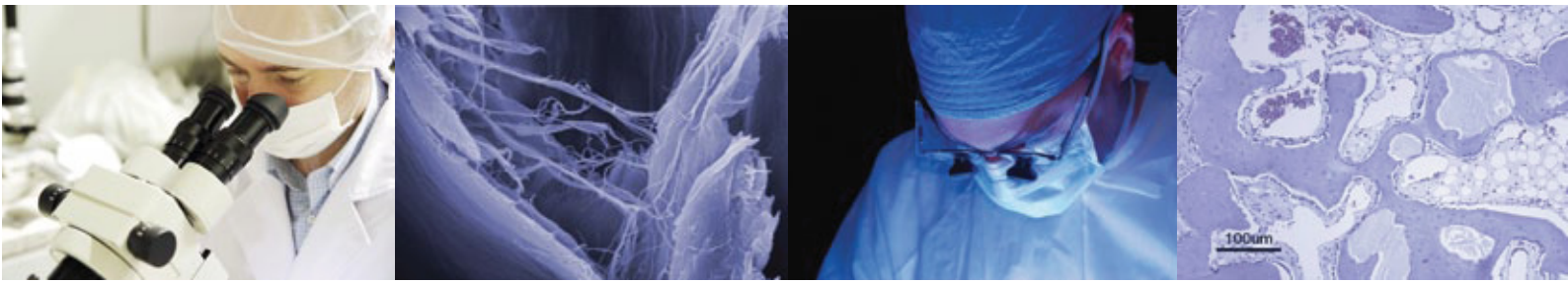
Calvo Guirado JL, Aguilar Salvatierra A, Ramirez Fernandez M, Maté Sanchez Del Val JE, Delgado Ruiz RA, Gomez Moreno G
BONE RESPONSE TO COLLAGENIZED XENOGRAFTS OF PORCINE ORIGIN (MP3®) AND A BOVINE BONE MINERAL GRAFTING (4BONETM XBM) GRAFTS IN TIBIA DEFECTS: EXPERIMENTAL STUDY IN RABBITS
 CLINICAL ORAL IMPLANTS RESEARCH, 2015 OCT;43(8):1583-8. EPUB 2015 JUL 4

Corbella S, Taschieri S, Weinstein R, Del Fabbro M
HISTOMORPHOMETRIC OUTCOMES AFTER LATERAL SINUS FLOOR ELEVATION PROCEDURE: A SYSTEMATIC REVIEW OF THE LITERATURE AND META-ANALYSIS
 CLINICAL ORAL IMPLANTS RESEARCH, 2015 OCT 10 EPUB AHEAD OF PRINT

mp3[®]

ULTIMATE PERFORMANCE AND HANDLING

Pre-hydrated collagenated heterologous cortico-cancellous bone mix



Tecnoss[®] s.r.l. is an innovative, globally active company that develops, produces and documents premium-quality xenogenic biomaterials by the brands Tecnoss[®] and OsteoBiol[®].

Its 20 years of research led to its patent-protected production process that ensures neutralization of antigenic components in order to achieve biocompatibility, while preserving the natural collagen matrix inside the biomaterial.

Tecnoss[®] products comply with highest quality standards such as ISO 10993, ISO13485 (notified body Kiwa Cermet) and 93/42/EEC (notified body CE 0373).

osteobiol.com

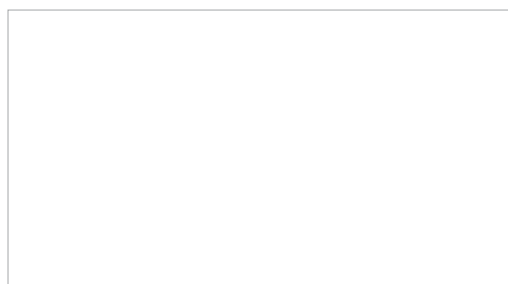
Authorized Distributor

Tecnoss[®] Dental

Via Torino, 23
10044 Pianezza (TO) | Italy
Tel +39 011 9682823
Fax +39 011 9787577
info@tecnoss-dental.com

osteobiol.com

International Sales & Marketing



MKT-MP30216EN

