

# diagnostic tip

RADII PLUS DIAGNOSTIC LED ATTACHMENT

LED AUFSATZ ZUR DIAGNOSTIK

PONTEIRA LED PARA DIAGNÓSTICO

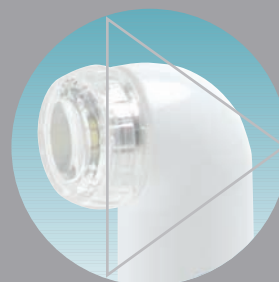
ADITAMENTO LED PARA DIAGNÓSTICO

EMBOUT DE DIAGNOSTIC L.E.D.

PUNTALE LED DIAGNOSTICO

KOŃCÓWKA DIAGNOSTYCZNA

诊断用LED附件



SDI



# see your patients in a different light!

# diagnostic tip



### Simple to use

The SDI Diagnostic Tip simply snaps onto the high-powered Radii Plus LED curing light, doubling the usefulness of your LED.

### Lights up the dark

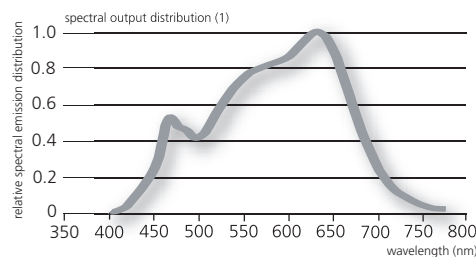
The SDI Diagnostic Tip lights up those hard to see areas to assist you in identifying:

- Cracks in cusps and teeth
- The depth of a subgingival fracture
- Subgingival calculus
- Interproximal decay
- Caries, where the radiographic image is questionable
- Caries removal within a new preparation
- Hidden root canal openings
- Non-vital teeth
- Leaking restorations

The SDI Diagnostic Tip may even bring to light these issues before any evidence of problems are found on the radiograph.

### Safe

The SDI Diagnostic Tip utilizes a high intensity 5W white LED that emits wavelengths in the range of 400-750nm, safely excluding all ultraviolet and infrared wavelength output. It is ideal for pregnant patients, patients receiving radiation treatment, squirming children or patients who otherwise cannot have radiographs.



### 5 year warranty

Unlike other diagnostic tips, the SDI Diagnostic Tip has a five year warranty.

### Other tips

The Radii Plus also has other detachable tips: Ortho and Bleach



<b>Radii Plus Diagnostic LED attachment</b>	5600068
<b>Radii Plus Single tooth Bleaching LED attachment</b>	5600058
<b>Radii Plus Orthodontic (Ortho) LED attachment</b>	5600059
<b>Radii Plus Standard LED attachment</b>	5600060
<b>Radii Plus (Australia / New Zealand)</b>	5600050
<b>Radii Plus (North &amp; South America / Asia)</b>	5600052
<b>Radii Plus (Europe)</b>	5600053
<b>Radii Plus (United Kingdom)</b>	5600051

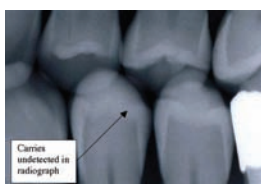
(1) LED Manufacturer's data.

Photos courtesy of Dr. Geoff Knight and John C Comisi DDS, FAGD, FACD, Ithaca, New York



Made in Australia by SDI Limited  
 Bayswater, Victoria 3153  
 Australia 1 800 337 003  
 Brazil 0800 770 1735  
 France 00800 022 55 734  
 Germany 0800 100 5759  
 Ireland 01 886 9577  
 Italy 800 780625  
 Spain 00800 022 55 734  
 United Kingdom 00800 022 55 734  
 USA & Canada 1 800 228 5166  
[www.sdi.com.au](http://www.sdi.com.au)

### Caries undetected



### Caries identified



### Caries removed

