

2009

REALITY  
Five Star Award

★★★★★  
REALITY'S  
CHOICES

# SuperEndo™ $\alpha^2$ & $\beta$

## Cordless Obturation Device

Compact, Convenient, Smart and Versatile,  
Consistent heat, 3D-Obturation



Where Innovation Meets Excellence  
**B&L Biotech USA, Inc.**

# SuperEndo™ $\alpha^2$

## Cordless Obturation Device



Introducing the Alpha II to enhance the success of conventional obturation techniques. Simple to use, this innovative device is compact, convenient and versatile. Alpha II's unique design offers 3-dimensional obturation, temperature control, as well as the convenience and ergonomics expected of a cordless product.

- Lightest device on the market
- Precision control of heat
- A variety of pluggers and instruments to suit any tooth and warm GP obturation technique
- Variable positions for easy access into any canal
- Very long battery life
- Quickly reaches desired temperature setting



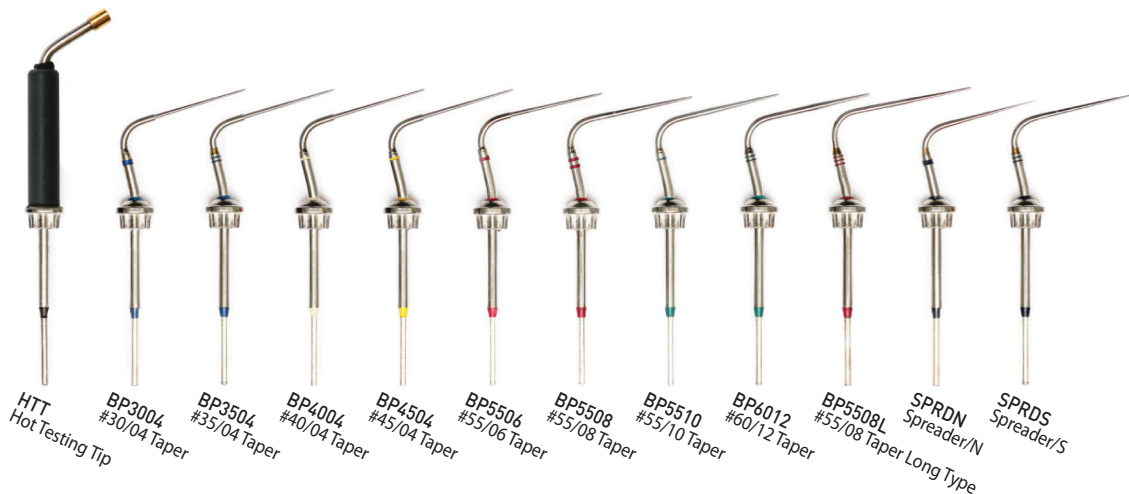
Plugger Stand  
Storage for B&L BL Pluggers

### Ordering Codes:

<b>ASK</b>	Alpha II Starter Kit
<b>BAB</b>	Alpha II Replacement Battery
<b>HTT</b>	Hot Testing Tip
<b>BPPS</b>	Plugger Protector Sleeve
<b>BP3004</b>	30/04 Taper Plugger
<b>BP3504</b>	35/04 Taper Plugger
<b>BP4004</b>	40/04 Taper Plugger
<b>BP4504</b>	45/04 Taper Plugger
<b>BP5506</b>	55/06 Taper Plugger
<b>BP5508</b>	55/08 Taper Plugger
<b>BP5508L</b>	55/08 Taper Plugger Long Type
<b>BP5510</b>	55/10 Taper Plugger
<b>BP6012</b>	60/12 Taper Plugger
<b>SPRDN</b>	Endo Spreader (Narrow)
<b>SPRDS</b>	Endo Spreader (Standard)

## B&L BL Pluggers

- Durable, high-grade stainless steel
- Precise temperature control
- Cools very quickly once heat is turned off
- Largest selection of sizes





# SuperEndo™ β

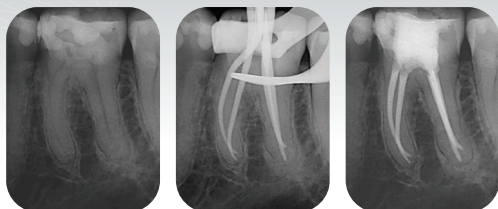
## Cordless Obturation Device

### CORDLESS. COMPACT.

With a battery that lasts days on a single charge\*, the BETA is the ultimate in portability. The small footprint of the BETA charge cradle makes the unit both convenient and compact.

### ERGONOMIC. PRACTICAL.

Lightweight and balanced for comfort, the BETA packs its punch in durability, withstanding the wear and tear of repeated use in the busiest of endodontic practices. This virtually maintenance-free unit also features a well-insulated heating chamber that keeps the gun surface cool to the touch for your safety as well as your patient's.



Courtesy of Dr. Gilberto Debellan

Obtured with warm gutta percha technique using Alpha II & Beta

\* On full charge, the BETA delivers 4 hours of continuous operation.

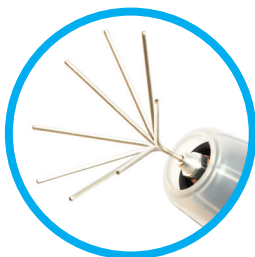
## DESIGNED FOR BETTER DENTISTRY.

*With the BETA in hand, you are in control. At any time during use you may adjust the temperature and/or your access angle to maintain ideal obturation flow.*

**4 TEMPERATURE SETTINGS** – With four accurate temperature pre-sets and an instant on/off at your fingertips, you control the consistency and temperature of the gutta percha or Resilon at all times during obturation, without wasting battery power.



**360° SWIVEL NEEDLE** – The primary clinical challenge with all injectable obturation procedures is the angle of entry to the canal, especially on maxillary cases. The BETA's patented 360° swivel needle permits the clinician to access the canal at any angle with ease. No more awkward gun or hand positions, no more stopping midway through the procedure to adjust the needle angle, and no more needle breakage.



**A PERFECT COMPLEMENT TO ALPHA2** – For the ultimate in warm vertical obturation efficiency, pair ALPHA A2 Cordless Heat Source with BETA Cordless Obturation Gun.



Gutta Percha Pellets  
 (available in soft, regular and hard)



Needles  
 (available in 21mm, 22mm, 24mm, 28mm & 50mm lengths and 20, 23 and 25 gauges)

### Ordering Codes:

- BSK** Beta Starter Kit
- BTP** Beta Thermal Protectors
- BPA** Beta Plunger Assembly
- BNPS** Beta Needle Protector Sleeve
- BGP####** GP Pellet (SOFT / REG / HARD)
- BSN2123** 21mm Needle, 23Gauge
- BSN2220** 22mm Needle, 20Gauge
- BSN2420** 24mm Needle, 20Gauge
- BSN2423** 24mm Needle, 23Gauge
- BSN2425** 24mm Needle, 25Gauge
- BSN2625** 26mm Needle, 25Gauge
- BSN2820** 28mm Needle, 20Gauge
- BSN2823** 28mm Needle, 23Gauge
- BSN5020** 50mm Needle, 20Gauge - VET
- BMT** Needle Bender / Wrench

# BL S-Kondenser

Warm gutta percha obturation techniques usually require condensation with vertical or lateral forces for an effective 3-dimensional fill. Essential to this technique are precision condensers which can condense thermoplasticized gutta percha in complex anatomy, including extremely curved canals and ovoid shaped canals.

*The BL S-Kondensers have been designed specifically for warm gutta percha techniques with these important design features:*

- A .04 taper NiTi end for apical condensation as well as a larger stainless steel end for middle and coronal third condensation
- A size 35 for smaller canal diameters
- NiTi end navigates even extremely curved canals and is manufactured with the highest grade Nickel Titanium
- Light-weight anodized aluminium handles
- Ergonomically placed finger rests for efficient condensing
- Laser etched markings on the NiTi end to identify the depth of the condenser



**Ordering Codes:**

<b>BCON35</b>	BL S-Kondenser 35/70
<b>BCON40</b>	BL S-Kondenser 40/80
<b>BCON50</b>	BL S-Kondenser 50/100
<b>BCON60</b>	BL S-Kondenser 60/120
<b>BCONSET</b>	BL S-Kondenser Set (35, 40, 50, 60)

Toll Free in USA : 877.452.2651

West Coast Office : 949.581.3636

 In Canada : 800. 265. 3444

info@bnlbio.com

bdshefsky@bnlbio.com

Order Direct at our online store! [www.bnlbio.com](http://www.bnlbio.com)



*Where Innovation Meets Excellence*  
**B&L Biotech USA, Inc.**